



Arts in Education Residency Level 1 Roster

Deadline for Grant Applications:
March 1, 2012

Level I Artists

DANCE

African American Dance Ensemble (Grades 3–5).....	3
Jody Cassell: Read! Write! Dance! (Kindergarten–Grade 5).....	4
Martha Connerton/Kinetic Works: Figment of Your ImagiNewton (Grades 3–5).....	5
Flamenco Vivo Carlota Santana: ¡Olé We Go! (Kindergarten–Grade 5).....	6
North Carolina Dance Theatre (Kindergarten–Grade 5).....	7

LITERARY ARTS

Belle Boggs: Where I’m From: Science Writing and Memoir (Grades 6–12).....	8
Mimi Herman: Poetry in the Classroom (Grades 3–5).....	9
Glenis Redmond: Tributary Poetry Project (Grades 9–12).....	10
Susie Wilde: Connecting Reading and Writing Methods through Story (Grades 3–5).....	11
Allan Wolf: Immersed in Verse (Grades 6–8).....	12

STORIES, SONGS AND CULTURAL PROGRAMS

Susana and Timmy Abell/Silver Trout Arts: Puppetry and Songwriting/Exploring Creativity in the Writing Curriculum (Kindergarten–Grade 5).....	13
Beverly Botsford: Wrap it in Rhythm: Exploring Language and Culture with Drums and Percussion (Kindergarten–Grade 5).....	14
The Healing Force: Faces of Africa: A Cultural Journey (Grades 6–8).....	15
The Magic of African Rhythm: Safari Ngoma in Action (Grades 6–8).....	16
Charles Pettee: Bluegrass Stomp: Hear the Sound of North Carolina, Then and Now! (Grades 3–5).....	17
Faye Stanley/Clapping Dog: Singing to Learn: A Multicultural Approach to Early Childhood Curriculum (Kindergarten–Grade 2).....	18
Donna Washington/DLW Storyteller Inc.: Stand and Deliver (Grades 3–5).....	19

THEATER AND PUPPETRY

Ebzb Productions: Get Connected: Stage Your History (Grades 9–12).....	20
Hobey Ford’s Golden Rod Puppets: Telling Folktales and Favorite Stories with Shadow Puppetry (Grades 3–5).....	21
Jef Lambdin, Mime: Writing, Action, Mime! Using Mime to Promote Writing Skills (Grades 3–5).....	22
Mike Wiley Productions Ltd.: North Carolina Freedom Stories (Grades 9–12).....	23
North Carolina Shakespeare Festival: Shakespeare to Go—On Your Feet (Grades 9–12).....	24

VISUAL ARTS

Tunde Afolayan: Mural Connection (Grades 6–8).....	25
Peg Gignoux/art pluriel, llc: Secret Room Pop-up Books (Grades 3–5).....	26
Bryant D. Holsenbeck: In The Natural World: An Installation Residency (Grades 3–5).....	27
Leni Newell: Exploring Batik (Grades 6–8).....	28
Sean Pace: Art Machines (Grades 6–12).....	29
Sandy Creek Weavers: Weaving Our History: A Fabric Time Capsule and Lap Loom Fever: (Grades 3–5).....	30

African American Dance Ensemble

Website: www.africanamericandanceensemble.org

Urban Sacred Forest

Curriculum Connections: Dance

The African American Dance Ensemble's mission is to preserve and share the finest traditions of African and African American dance and music through research, education and entertainment. With the motto, "Peace, love, respect for everybody," the Ensemble celebrates traditional African culture, aesthetics and values as resources to encourage interracial cooperation, cross-cultural understanding and societal analysis.

In The Urban Sacred Forest, a 5-day residency led by three musicians and three dancers, participants will learn dance, music, songs and history indigenous to African and African American traditions. Lessons include Wisdom from the Elders, honoring parents and teachers and reflecting how honoring the Elders of the community leads to a deeper respect for self. Residency includes work with one core group and two workshops per day with individual classes. At the conclusion of the residency, the core group will present a culminating school-based performance to showcase the skills they learned during the residency.

Residency Fees and Requirements

Grade Levels:	3-5
Maximum Number of Classes per Day:	3 (2 workshops, 1 with core group)
Total Residency Cost:	\$10,000

Technical and Volunteer Requirements: Movement workshops and student performance may be conducted in a gym or multi-purpose room. Site will need to provide a sound system. The company will need access to electrical outlets, two changing rooms and be provided with enough water for all performers.

Contact Information

African American Dance Ensemble
 Normadien Gibson Woolbright
 (919) 560 2729
aadedance@earthlink.net

Jody Cassell

Website: www.movingYOUtolearn.com

Read! Dance! Write!

Curricular Connections: Language Arts, Science, Mathematics, and Dance

Jody Cassell, M.F.A., M.S., is a dancing storyteller, teaching artist in dance and author of the children's book *Where's Leon?* Cassell also presents her work nationally as a master artist with the Wolf Trap Institute for Early Learning Through the Arts. She brings more than three decades of experience to creative movement-based learning. Her specialization is the integration of curriculum and dance/creative movement in classroom and professional development settings.



Students will swoop into reading and writing skills through kinetic involvement and then make connections to other curricular areas. On day one they will learn to creatively move action verbs and learn to read dance symbols for those verbs. They will create a dance/English dictionary, “write” a dance sentence using these symbols, choreograph their sentence, read the sentence to their classmates, informally perform their creations and then journal their sentences in dance symbols and English words. During days two and three they will modify basic sentences by moving, choreographing, performing and then writing juicier sentences with adverbs and adjectives. On days four and five, students will explore the impact of changes of state, the weather or the laws of motion on the choreography of their sentences. As their paragraphs come alive with informal performances, the students will use their memory about what they have learned and apply their understanding to begin to analyze, evaluate and generate questions about the choreographic process. How many students perform and how long it takes them to perform provides the foundation for exploring the mathematics concepts of fractions, elapsed time and graphing the results. The students will also learn to verbally critique what they have created. This program has been successfully presented in grades K–5 with modifications according to grade level.

Residency Fees and Requirements

Grade Levels:	Kindergarten–Grade 5
Maximum Number of Classes per Day:	Four
Total Residency Cost:	\$5,000

Technical and Volunteer Requirements: Clean, open space with easy access to electrical outlet and dry erase board; if classroom is used, chairs should be on the periphery.

Contact Information

Jody Cassell
20 Streamview Court, Durham, N.C. 27713
(919) 338-8052 or (919) 641-0962
movingtolearn@nc.rr.com

Flamenco Vivo Carlota Santana

Website: www.flamenco-vivo.org

¡Olé We Go!

Curriculum Connections: Social Studies and Dance

Carlota Santana Spanish Dance Company (also known as Flamenco Vivo Carlota Santana) was founded in 1983 with the following mission: to foster recognition of the art form of flamenco as prominent in the performing arts and as an integral part of the Hispanic heritage; to create quality traditional and cutting edge new works and arts education programs that catalyze connections among people of different cultures; to enhance education by utilizing the expressive power of the arts; and to nurture the next generation of Spanish dance artists. Celebrating its 25th anniversary in 2008, Carlota Santana's thriving Spanish dance company is known for its innovative performances, extensive community-based initiatives and in-depth arts education programs. Artists from the U.S. and Spain make up the company.



¡Olé We Go! teaches students the pride, emotional expression and discipline required to master the art of flamenco. The rhythms and multicultural history of the dance offer a new channel for self expression and a window into different cultures. Four groups of students are taught daily by our professional dancers and musicians throughout this week-long intensive program.

The residency includes:

- One 45-minute lecture demonstration with two dancers, a singer and a guitarist. This lively performance serves as an introduction to flamenco and includes student interaction and information about flamenco's culture and history.
- Daily classes throughout the week with a dancer and musician. Students will learn flamenco dance techniques, music, vocabulary and cultural information.
- Residency students perform in a culminating show in flamenco costumes for their parents and peers.

Residency Fees and Requirements

Grade Levels:	Kindergarten–Grade 5
Maximum Number of Classes per Day:	Four
Total Residency Cost:	\$10,000

Technical and Volunteer Requirements: Residency: Dance room, gym or other large space; if a classroom is used, desks and chairs must be pushed against the wall before artists arrive. Performances: Wooden floor, four armless chairs, two to three standing microphones and water for the artists.

Contact Information

Carlota Santana
105 Vista Del Rio Drive, Bahama, N.C. 27503-0151
(919) 479-9940
carlota@flamenco-vivo.org

Martha Connerton/Kinetic Works

Website: www.mckineticworks.org

Figment of Your ImagiNewton

Curricular Connections: Science and Dance

Charlotte's premier contemporary dance company offers exemplary education programs in the form of KINETIKids residencies and KINETYX Active Learning Performances that are integrated with math, science, language arts and social studies while fulfilling our mission: "To foster awareness and appreciation of dance as an art form that impacts lives in a positive and evolving process." Founding artistic director Martha Connerton has extensive credits as a performer, choreographer and arts educator nationwide. She has worked with the Lincoln Center Institute, N.C. Dance Theatre, N.C. Blumenthal Performing Arts Center Education Department and been on arts education rosters in N.C. and S.C. for over 15 years.



During the residency, students will learn basic dance and choreography skills and will be introduced to Isaac Newton's laws of motion through creative movement/choreography sessions. Science concepts include force, acceleration, friction, gravity and the three laws of motion. Students will create movement studies that demonstrate these concepts. No prior dance experience is needed for children to engage in and enjoy these activities.

On the final day, the students' work will be combined with a KINETYX Active Learning Performance, Science in Motion, performed by the company's dancers. Unless a school has less than 400 students, separate performances are presented for grades K–2 and 3–5. Kinetic Works also provides the school with a DVD of the Science in Motion show and a packet of educational materials to keep in their media center.

Residency Fees and Requirements

Grade Levels:	3–5
Maximum Number of Classes per Day:	Five
Total Residency Cost:	\$10,000

Technical and Volunteer Requirements: Residency: Furniture-free classroom/multi-purpose room with two small tables, several chairs, and dry erase board or chart paper. Performance: A 25' x 25' clean and obstruction-free stage or gym/multi-purpose room with electrical outlets, P.A. system and nearby clean changing area and restrooms.

Contact Information

Martha Connerton
1609 Nassau Blvd., Charlotte, N.C. 28205
(704) 338-1533
marthacon2@aol.com

North Carolina Dance Theatre

Website: www.ncdance.org

Crossing Boundaries

Curriculum Connections: Social Studies, Language Arts, Science, and Dance

NC Dance Theatre is a Charlotte-based ballet company focused on performing, inspiring and educating through diverse programming. Dance Theatre is known for its strong dancers and versatile repertoire, ranging from classical to bold, contemporary ballets.

Crossing Boundaries, Dance Theatre's arts education program, provides a week-long dance residency with access to high-quality performance for K-5 students. Six professional dancers will inspire students with an interactive lecture demonstration, narrating and performing five "green" themed ballets from Dance Theatre's Innovative Works performance series. Dances fuse contemporary choreography with environmental issues. Following the performance, a dance residency will be presented by three dancers and one Teaching Artist, entitled "The Tree Huggers." Students will connect concepts found in dance, science, and social studies, by exploring the eco-system through movement. Students will experience the process of using a related book as inspiration to create their own dances.

Residency Fees and Requirements

Grade Levels:	Kindergarten–Grade 5
Maximum Number of Classes per Day:	Four
Total Residency Cost:	\$10,000

Movement workshops may be conducted in a cleared classroom, a gym or multi-purpose room. NC Dance Theatre Teaching Artist will bring a portable sound system, or "boom box", for movement classes if there is no sound system available on site. Lecture demonstration performances may be conducted on a stage, in a gym, or a large multi-purpose room. NC Dance Theatre will provide a portable sound system with a microphone and CD player if the venue does not have one available on site, as well as a portable dance floor, for their company performance. The company will need access to electrical outlets, two changing rooms and be provided with enough water for all performers.

Contact Information

North Carolina Dance Theatre
April Berry, Director of Education and Outreach
701 North Tryon Street
Charlotte, NC 28202
(704) 372-0101
aberry@ncdance.org

Belle Boggs

Website: belleboggs.wordpress.com

Where I'm From: Science Writing and Memoir

Curricular Connections: English Language Arts and Sciences

Belle Boggs is a fiction writer, essayist, and teacher who has worked in project-based K-12 classrooms across the country. Her debut collection of stories, *Mattaponi Queen*, was awarded the Bakeless Prize and the Library of Virginia Literary Award for Fiction. Her teaching practice and her writing center on narrative expression with a particular focus on character and place.



“Where I’m From: Science Writing and Memoir” is an interdisciplinary workshop that asks, how does where you live influence who you are? Focusing on direct observation, description, and memory, students will work to produce a memoir that is grounded in nature and place. Students will write about what is particular about the place they come from—including climate, natural resources, and environmental issues—and how it affects their lives. The work will be shared through web publication and communication with students from another part of the country, which will open an ongoing conversation about place and how it influences identity.

Before the workshop, Boggs will coordinate with science teachers in the school to investigate relevant environmental/ecological issues and will get to know the school through a series of questions, readings, and student posts to the project website. She will also coordinate with a school in another part of the country to establish a web partnership ahead of the workshop, so that the partner workshop happens concurrently. The communication with other students, living hundreds or thousands of miles away, will deepen students’ experience with the process and sharpen their focus on their own work. The final presentation will feature a reading of student work to families as well as a web gallery of student essays.

This workshop addresses a Common Core curricular goal of interdisciplinary work between English Language Arts and the Sciences. It also teaches students to conduct original research inspired by a central question and satisfies the goal of using technology, including the Internet, to share, revise, and publish writing.

Residency Fees and Requirements

Grade Levels:	6–12
Maximum Number of Classes per Day:	Four
Total Residency Cost:	\$6,000

Technical and volunteer requirements: the ability to spend some time outside, teachers willing to communicate ahead of the workshop. Parent volunteers are welcome during workshop.

Supplies needed: notebooks, computer or laptop lab with at least one computer for every two students.

Digital cameras for students to share.

Contact Information

Belle Boggs

2895 Chicken Bridge Road, Pittsboro, NC 27312

(202) 590-7067, (919) 942-7835 or (202) 590-7067

belleboggs@hotmail.com

Mimi Herman

Website: www.mimiherman.com

Poetry in the Classroom

Curricular Connections: Language Arts

Mimi Herman transforms lives. She has taught over 25,000 students and teachers — many of whom would rather scrub a bathtub than write a poem — to fall in love with writing. As one student says of her time with Mimi: “It is an experience that I will hold with me throughout my whole life.”



Mimi is the director of the United Arts Council Arts Integration Institute and a Teaching Artist Journal associate editor. She travels the country, teaching educators to use the arts throughout the curriculum. The author of *The Art of Learning*, Mimi has published poetry, stories and articles in national and local magazines and newspapers. As one student says of her time with Mimi, “It is an experience that I will hold with me throughout my whole life.”

Can you smell your grandmother’s chocolate chip cookies baking? Dive into a cool, blue swimming pool on a steamy August day? Mimi Herman leads your students to writing and makes them think. As they swim through memory and imagination, they learn to express themselves clearly through imagery, metaphor and simile, and to write not only for assignments, but also for themselves. They also discover the joys — yes, joys — of revision, and gain the skills they need to write and edit everything from poetry to the next book report.

Parents, grandparents, sisters, brothers and cousins are invited to join us for an evening of poetry recitation and writing. From a student performance to a family poetry-writing activity, this family night showcases poetry, family and your school community.

Residency Fees and Requirements

Grade Levels:	3–5
Maximum Number of Classes per Day:	Three to Four
Total Residency Cost:	\$5,000

Technical and Volunteer Requirements: Residency: Classroom with whiteboard or blackboard with markers or chalk, computer access, and a stool. Family Night: For family nights in schools with large ESL populations, an interpreter, microphone and headset for non-English speaking families can increase the attendance and effectiveness of the workshop, particularly if the workshop is advertised as being available to speakers of another language.

Contact Information

Mimi Herman
810 Lancaster Street, Durham, N.C. 27701-1550
(919) 606-7686
mimiherman@gmail.com

Glenis Redmond

Website: www.glenisredmond.com

Tributary Poetry Project

Curricular Connections: Language Arts

Glenis Redmond is a poet and educator traveling the country over 175 days a year bringing poetry to all ages. Recently Glenis was instrumental in creating the first writer-in-residence program at the National Historic Home Site of Carl Sandburg. Glenis is a Kennedy Center Partners in Education teaching artist. Her latest publication is *Under the Sun*. She is a N.C. Arts Council Literary Fellow, a Denny C. Plattner Award winner for outstanding poetry awarded by the journal *Appalachian Heritage*, and a widely published poet. Glenis believes poetry has the mouth to speak when all other mouths are silent.



The etymology of the word tributary appropriately means “one who pays tribute.” It also means a “stream that flows into a larger body.” Tributary Poetry Project is a writing initiative that focuses on place-based and regionally centered poetry, encouraging participants to reflect on the stories, facts and myths of their own family and community. Participants will use the Tributary interview form to conduct interviews and then find appropriate poetic form to create at least one poem honoring the region or unsung hero and shero.

The residency will conclude with a school or community event where Glenis and students will share their poems. As students learn about their community and themselves, both become stronger. In the process, students will use brainstorming, imagery and layering to write powerful and effective poems. Clear and easy poetic structures and formats empower students. Students will use interviewing and listening skills and also learn tips for presenting their poetry.

Residency Fees and Requirements

Grade Levels:	9–12
Maximum Number of Classes per Day:	Four 45-minute workshops or two 90-minute block schedule workshops per day with 25–30 students per class
Total Residency Cost:	\$6,000

Technical and Volunteer Requirements: Workshops: Classroom or media center with desks or tables and chairs; erase board; flip chart on stand or blackboard; pencils and journals or pads for students.

Performance: Sound system with microphone, preferably clip-on or lavalier, if necessary a microphone on a stand will work (a complete technical writer is available upon request).

Contact Information

c/o Loyd Artists
126 Worley Cove Road
Leicester, N.C. 28748
(800) 476-6240 or (828) 683-1997
FAX: (518) 647-5674
info@loydartists.com or peggy@loydartists.com

Susie Wilde

Website: www.ignitingwriting.com

Connecting Reading and Writing Methods through Story

Curricular Connections: Language Arts

Susie Wilde, M.Ed., is a published author and columnist for the Raleigh News & Observer. For more than 25 years, she's shared her passion for reading, writing and reviewing in workshops for parents, teachers and students.

Wilde's residency connects reading and writing strategies as students collaborate to complete an original story. Sessions start with engaging picture books chosen to introduce literary concepts, promote critical discussion and launch parallel writing explorations. With the help of books and Wilde's Story Skeleton, students will understand the "bones" of story structure, from character traits to resolution. Students will evaluate, interpret and apply what they have understood as they follow Wilde's playful progression of writing activities that link and build to a collaborative story. Together, students will invent a whimsical character that inspires a well-sequenced plot with descriptive supporting details. At the end of the workshop, each student receives a copy of the class story in a book prepared for their individual illustrations.

This residency aligns with an array of Common Core goals including: generating ideas with pre-writing; drafting, planning and organizing creative thinking, and integrating and evaluating through editing. The workshops also provide teacher support—modeling, bibliographies, child-centered materials, and a professional development seminar as well as a fun-filled evening for the students' families to celebrate reading and writing.

Residency Fees and Requirements

Grade Levels:	K-12
Maximum Number of Classes per Day:	Four
Total Residency Cost:	\$5,000

Technical and Volunteer Requirements: Classes: Classroom with an overhead projector, if possible; flip chart stand and white board; access to printer and copier. Teachers will be asked to create overheads. If the residency occurs in a library or meeting room, tables for writing in small groups are required. Family Night: Pre-registration is required and volunteers are needed to coordinate event. Depending on the size of audience, an auditorium with chairs or a classroom may be needed. If in an auditorium, please provide a lapel mic, overhead projector and flip chart. Professional Development Workshop: A room that will fit all teachers in the school. Flip chart stand, tables for group working and for presenter's table.

Contact Information

Susie Wilde
7400 Talbryn Way, Chapel Hill, N.C. 27516
(919) 932-3300
susiewilde@bellsouth.net



Allan Wolf

Website: www.allanwolf.com

Immersed in Verse

Curricular Connections: Language Arts

Immersed in Verse offers middle schools the opportunity for a poetry immersion week with author/performer Allan Wolf. Conducting more than 100 performances and workshops every year, Allan is a veteran traveler through all the diverse worlds of verse. Wolf's books include *The Blood-Hungry Spleen and Other Poems About Our Parts* (Candlewick Press) chosen as one of the Top Ten Poetry Picks of 2008; *New Found Land: Lewis and Clark's Voyage of Discovery* (Candlewick Press), a novel in verse chosen as a Best Book by School Library Journal and the American Library Association. Wolf's novel in verse *Zane's Trace* (Candlewick Press) won the N.C. School Library Media Association Young Adult Book Award for 2008, selected by middle school students in the state.



The residency includes: poetry writing workshops to generate skill and enthusiasm for writing and reading poetry; self-understanding through the "Where I Come From?" prompt; a two- to three-hour intergenerational poetry workshop for families; or a performance for families or students that includes the students' sharing their work.

Writing poetry helps writers to find their individual writing voices, while the mastery of language devices commonly found in poetry (such as repetition, internal rhyme, assonance, consonance, refrain, pattern, sequencing, active word choice, etc.) empower students with the writing tools to execute all writing tasks. Poetry can augment any existing content lesson.

Residency Fees and Requirements

Grade Levels:	6–8
Maximum Number of Classes per Day:	Four; 25 students per class
Total Residency Cost:	\$5,500

Technical and Volunteer Requirements: Workshops: Classroom or media center with desks or tables and chairs; pencils and journals or pads for students. Performance: If a sound system is not available, all sound for performances will be provided.

Contact Information

c/o Loyd Artists
126 Worley Cove Road
Leicester, N.C. 28748
(800) 476-6240 or (828) 683-1997
FAX: (518) 647-5674
info@loydartists.com or peggy@loydartists.com

Susana and Timmy Abell/Silver Trout Arts

Website: www.silvertrout.org

Puppetry and Songwriting/Expanding Creativity in the Writing Curriculum

Curricular Connections: Language Arts, Theater Arts, Music

Susana Abell is a bilingual teaching artist whose work as a circus performer and puppeteer has spanned two decades and three continents. Before establishing Silver Trout Arts in 2005, she was supported by Carnegie Hall and the Geraldine R. Dodge Foundation teaching puppetry arts in the New York metro area.

Timmy Abell is a nationally recognized songwriter, recording and touring artist who has spent 30 years presenting concerts of music and storytelling for young people and families. He is a recipient of the N.C. Arts Council's Fellowship for songwriting and has received the highest national awards for his recordings.



Susana and Timmy Abell's residency effectively uses the arts of puppetry and songwriting to build creativity and strengthen writing skills for students in grades K–5. The residency involves every student, every teacher and every family, creating an exciting week of arts-infusion through multiple concerts and workshops.

The foundation of the residency involves four “core group” classes, selected for an in-depth arts integration experience. Susana guides two classes for five days in puppet-making, character development, story form, dialog and creation of short puppet plays. Timmy guides two other core groups through the week in songwriting — learning the literary and musical skills to create and then record to CD an original song.

This residency also includes two assembly concerts (K–2 and 3–5), additional non-core group workshops each day for selected grade levels and an evening family concert, easily publicized with pre-designed materials available for download at www.silvertrout.org.

Residency Fees and Requirements

Grade Levels:	Kindergarten–Grade 5
Maximum Number of Classes per Day:	Four core groups (two music and two puppetry) and one non-core group daily; two assembly concerts on Monday and a 6:30 p.m. family concert on Thursday
Total Residency Cost:	\$7,745

Technical and Volunteer Requirements: Music Workshops: Chalk or marker board (smartboards are great, if available). Puppetry Workshops: If possible, the same space for each workshop (media center, art room, stage area); flat work surfaces for puppet-making. Performance: Sound system provided by artists; two 6-foot tables and a wooden piano bench or something comparable.

Contact Information

Susana and Timmy Abell
 379 Beaverdam Road, Asheville, N.C. 28804
 (828) 253-7225 or (828) 433-6000 (cell)
fishing@silvertrout.org or timmy@timmyabell.com

Beverly Botsford

Website: www.beverlybotsford.com

Wrap it in Rhythm: Exploring Language and Culture with Drums and Percussion

Curricular Connections: Music, Language Arts and Social Studies

Beverly Botsford is a cross-cultural percussionist and educator who blends music, movement and stories in solo and ensemble presentations. Embracing drumming traditions of Africa, Cuba, Brazil and her native North Carolina, she celebrates more than 30 years of professional experience teaching and performing all over the world.

In the Wrap it in Rhythm music residency, Beverly Botsford guides students in creating a multi-layered rhythm orchestra, to explore cultural diversity, build character and enhance language arts curriculum. Weaving words and rhythms, students will learn essential music skills playing percussion from around the globe, with a focus on drums from Africa and Latin America. Spiced with song, stories, movement and spoken word, the classes develop skills of teamwork, listening and self-expression.

Using classroom text from poems, stories and other content, students will use music to explore the use of rhythm, repetition, accent and inflection, enhancing language fluency. They will compose rhythms that will become part of a group piece shared on the last day of the residency.

Beverly Botsford will open the residency with a performance of Dancing Drums for the whole school, sharing excitement of universal rhythm, world culture and language through music, stories and dance and conclude with a sharing in the classroom on the final day.

Residency Fees and Requirements

Grade Levels:	Kindergarten–Grade 5
Maximum Number of Classes per Day:	Three or four 45- to 55-minute classes per day
Total Residency Cost:	\$5,000

Technical and Volunteer Requirements: Residency: A secure space in which instruments can be set up and left overnight and to which students can come to work with the artist; two medium-sized tables and 12 folding chairs; access to CD player. Singing and drumming will occur during the residency, so the space should be isolated from other classrooms, if possible. Access and Volunteers: Artist will need to drive as close as possible to presentation site for unloading and loading; two volunteers are needed to help with equipment and setting up space. Performance: Maximum audience size is 300; a P.A. system with at least 3 inputs and two microphones on stands are needed.

Contact Information

Beverly Botsford
5612 Willet Road, Durham, N.C. 27705
(919) 384-8418 or (919) 824-3821
bbshekere@aol.com or beverly.botsford@gmail.com



The Healing Force

Website: www.thehealingforceonline.com

Faces of Africa: A Cultural Journey

Curricular Connections: Social Studies and Music

The Healing Force is a family of artists that has brought cultural enrichment to the community through high-energy performances, educational residencies and workshops for the past 20 years. Joseph Anderson (former recording artist) and Gail Anderson (former school/music teacher) founded the group in 1975. Sonji Gardner and Karim Anderson have been performing music and storytelling since they were children.



Faces of Africa: A Cultural Journey is a unique hands-on residency designed to give each student (30 maximum per class) a broader perspective of culture and an opportunity for creative expression. The activities include drumming (artists will provide 30 drums for sessions), dance, song, shekere-making (the beaded gourd instrument), and a display of pictures (“Faces”). Students will learn about the cultures from which the drum originated.

The culminating event is a 60-minute school-wide performance in which the students who participated in the residency will join The Healing Force in a rousing celebration, The Rhythm of the Drum. The students will dance, sing and drum during the performance, and their beautiful shekeres will be on display.

Residency Fees and Requirements

Grade Levels:	6–8
Maximum Number of Classes per Day:	Three
Total Residency Cost:	\$8,000

Technical and Volunteer Requirements: Workshops: Large room away from other classrooms due to noise level; 35–40 folding chairs; six 6-foot tables that can be set up and broken down as needed; one teacher must be present for each workshop; access to the space for duration of residency. Performance: Access to space (stage can be used) one hour prior to performance; one electrical outlet; 10–15 chairs; dressing area for four people.

Contact Information

Gail Anderson
5314 Oak Ridge Place, Winston-Salem, N.C. 27105
(336) 767-2724 or (336) 231-1433
thehealingforce@aol.com

The Magic of African Rhythm

Website: www.tmoar.com

Safari Ngoma in Action

Curricular Connections: Social Studies, Dance and Music

Two of the company members, Mabinti and Teli Shabu, were born in West Africa and have studied, choreographed and performed traditional West African dance and drumming throughout Africa and the Diaspora. Other company members — Aya Duafe, Rhonda Harrison, Ibrahim Sylla, Kamu Mimy and Atiba Rori — are African American Dance Ensemble alumni and prominent North Carolina teaching artists.



Safari Ngoma in Action is a five-day multidisciplinary residency with a 45-minute performance by Djembe Fire! The performances of Djembe Fire! display the vibrancy of Africa's many rhythms. Drums, dance, song and story carry audiences across the colorful spectrum of the entire continent. Audiences are invited onstage to join the celebration.

During the residency, students will have hands-on experience with African dance, song and drumming as well as storytelling as they work with artists rotating through two main art disciplines. On the final day students will come together in a group format to share with one another what they have explored on safari and how these art forms connect through a unifying rhythm — Ngoma.

Residency Fees and Requirements

Grade Levels:	6–8
Maximum Number of Classes per Day:	Day 1: two classes Days 2–5: six classes per day
Total Residency Cost:	\$10,000

Technical and Volunteer Requirements: Residency: Large space for group orientation and group sharing; drumming space away from quiet study areas; dance space clear of furniture; secure storage space for drums; and a boom box. Performance: Clear, open area with dance floor or equivalent; two microphones with P.A. system; 10 armless chairs; backstage dressing area or equivalent; access to performance space at least one hour prior to show.

Contact Information

Maisha Shabu
P.O. Box 14724, Raleigh, N.C. 27620
(919) 828-1906
info@themagicofafricanrhythm.com

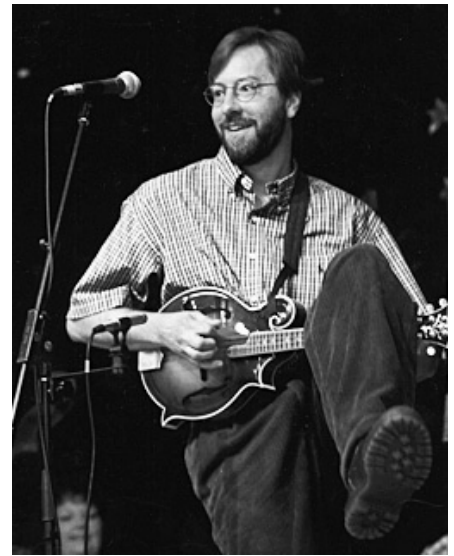
Charles Pettee

Website: www.charlespettee.com

Bluegrass Stomp: Hear the Sound of North Carolina, Then and Now!

Curricular Connections: Music History, Music Composition, and Social Studies

Charles Pettee (pronounced “Petty”) delights audiences with a tasty blend of original and traditional bluegrass music seasoned at more than 4,500 performances throughout the U.S., Canada and Europe. He is a founding member of the world-traveling Shady Grove Band, and is currently working on his thirteenth full-length CD/album. His love and mastery of southern string music have made him a sought-after performer in educational settings for over 20 years, where his gift for teaching and rapport with students and teachers garner rave reviews.



Students learn that folk music is not just a relic from the past in this residency. Mr. Pettee unpacks the sounds of southern string music from “the Pilgrims to the present” and invites students and teachers alike to experience social studies through clapping, singing and even writing folk music. Students are introduced to the instruments (guitar, mandolin, banjo and harmonica) and the musical sounds (blues, bluegrass, Celtic, gospel) of many of the cultures that have immigrated to the U.S. They also get to create music! Under Pettee’s supportive direction, students will write their own folk song that reflects their interests and their community. An assembly caps off the week during which the school community gets to hear the story of southern string music from Mr. Pettee and the new song performed by the classes that wrote it.

“What a wonderful way to experience the many cultural influences of our southern heritage...” (Norma McDonald, Principal, N. Duplin Elementary)

Residency Fees and Requirements

Grade Levels:	3–5
Maximum Number of Classes per Day:	Four
Total Residency Cost:	\$5,000

Technical and Volunteer Requirements: Residency: Classroom or library; armless chair; white board (or blackboard); large world map; and table. Performance: Gym or multi-purpose space.

Contact Information

Charles Pettee
318 Burris Place, Chapel Hill, N.C. 27516
(919) 967-1381
charles.pettee@gmail.com

Faye Stanley/Clapping Dog

Website: www.clappingdog.com

Singing to Learn: A Multicultural Approach to Early Childhood Curriculum

Curricular Connections: Social Studies and Music

Faye Stanley guides students in an amazing array of musical, multicultural games and stories. This wealth of material reflects her many years as a performer, educator and classroom teacher. She currently designs and leads professional development on arts integration for organizations including the Kennedy Center, staff development for educators and N.C. Wolf Trap. Faye also directs Duke University's Arts and Engagement Project.

Based on Faye's Kennedy Center workshop, the residency employs traditional singing games from world cultures as a strategy for cross-curricular study. Students will be taught games in their traditional form, and then will use each singing game to address a range of targeted goals. For example, the African American chant *When I Was a Baby* will be taught to students (singing a varied repertoire of music: Music Competency Goal #1; learning about music in relation to history and culture: Music Competency Goal #9). This same piece is then used to undertake goals in science, wherein students create descriptions of each of the stages of the life cycle of the butterfly (2nd grade, Science Competency Goal #1.03: observe different stages of insect life cycles).

In this manner, each singing game is used to undertake grade-level specific objectives in math, science, social studies, language arts and music, providing a fun, whole-body experience of the arts, world cultures and classroom learning objectives.

These pieces, as created by students, will be shared in a family workshop or school culminating event.

Residency Fees and Requirements

Grade Levels:	Kindergarten–Grade 2
Maximum Number of Classes per Day:	Four
Total Residency Cost:	\$5,000

Technical and Volunteer Requirements: Classroom: Space for students to sit on floor in a circle with room for standing and moving; globe or world map; space to write; and markers. If possible, space should allow for students to move back and forth from open space to tables or desks for work in small groups. Family Workshop: Large space may require a sound system. If the school is unable to provide a sound system, the artist can provide it if assistance is available for unloading, transporting to classroom and setting up and loading the equipment. Sound check 45 minutes prior to session and someone to manage/oversee the equipment during the session. Access to electrical outlets is needed.

Contact Information

Faye Stanley
3109 Five Forks Road, Chapel Hill, N.C. 27516
(919) 968-1168
clappingdog@nc.rr.com



Donna Washington/DLW Storyteller Inc.

Website: www.donnawashington.com

Stand and Deliver

Curricular Connections: Language Arts and Theater Arts

Donna Washington is a multiple award-winning, internationally-known storyteller and published author who has been performing professionally and teaching as an artist-in-residence for 22 years. In this hands-on, fast-paced interactive residency, students will present short pieces of improvisational story theater, engage in a simulation of the oral tradition and experience the process of crafting a story from page to stage. The residency culminates in an evening event called It's a Family Affair which is designed to encourage families to spend time sharing stories with each other at least once a week as a way to keep communication open, spend time together without the phone or television, and build respect by encouraging them to listen to each other.



The types of stories for each residency can be chosen to enhance the social studies and or language arts curriculum for each grade level. Stand and Deliver addresses the arts competencies of interpreting material through improvisation, assuming roles and creating characters, directing material through planning and cooperation, and researching characters to understand their motivations and likely actions. In addition, the residency will address the importance of responsible audience participation and the links between storytelling and other aspects of culture both technologically and socially. Students will learn about blocking, choreographing movement for specific characters to tell a story, and collaborating on the production of a piece of art work in small groups. They will do it all while having an amazing time.

Residency Fees and Requirements

Grade Levels:	3–12
Maximum Number of Classes per Day:	Three
Total Residency Cost:	\$6,180

Technical and Volunteer Requirements: Space that can accommodate student movement; chairs, desks, and tables should be able to be pushed to the sides of the room; pencil and paper for students to take notes.

Contact Information

David Klibanow, Manager
2 Haggis Court, Durham, N.C. 27705
(919) 471-3036 or (919) 452-8857
qbot5@aol.com

Ebzb Productions

Website: eee.Ebzb.org

Get Connected: Stage Your History

Curricular Connections: Language Arts, Social Studies and Theater Arts

Founded in 1998 by award-winning artists Serena Ebhardt and David zum Brunnen, Ebzb Productions' mission is to develop theatrical works that promote integrity, self-discovery and positive transformation of individuals, artists, audiences and communities. Their collaborative and individual work has now been experienced by thousands, if not millions, through national public television broadcasts, in live theatrical performances that have toured throughout the country, and in community-based residencies in North Carolina and elsewhere.



Ebzb's work is created in the belief that theater influences and encourages a life to be positively transformed through discoveries unveiled — immediately or over time. That said, the primary goal of the residency is to create an appreciation for historical narrative within one's own community, to create an appreciation of history and its relevance to the present day for the students and community members involved, and to provide the tools for the creation of an historical narrative that could be presented to the public. If desired, an additional goal can include the presentation of an actual performance created by those who participate in this residency. Students are guided through a process of creating a theatrical work out of a community oral history project, based on interviews and research the students conduct on a subject particular to their immediate region. Students are provided the tools needed to adapt the oral history that they are creating themselves into a public presentation.

Residency Fees and Requirements

Grade Levels:	6–12
Maximum Number of Classes per Day:	Three
Total Residency Cost:	\$8,000

Technical and Volunteer Requirements: Climate-controlled, clean open space (dimensions no less than that of a standard classroom) with electrical outlets available; chairs for participants and/or audience.

Contact Information

David zum Brunnen and Serena Ebhardt
 1121 Horton Pond Road, Apex, N.C. 27523-5612
 (919) 387-4616 or (919) 219-0303 or (919) 210-2021
ebzb@earthlink.net

Hobey Ford's Golden Rod Puppets

Website: www.loydartists.com

Telling Folktales and Favorite Stories with Shadow Puppetry

Curricular Connections: Language Arts and Theater Arts

Winner of puppetry's highest honor, the UNIMA Citation of Excellence and recipient of three Jim Henson Foundation grants, Hobey Ford is known for excellence in puppetry performance and craft. Hobey's intricate shadow puppetry work and creation of the original rod puppets, the "Foamies," have earned him a place on stages across the world.

Hobey utilizes his artistic study at the State University of New York at Purchase and the University of North Carolina at Asheville to design and construct all of his Golden Rod Puppets and the beautiful sets that surround them. Hobey also draws on his early experiences growing up in coastal Connecticut and living in a Nevada Native American community in writing the scripts for some of his performances such as Whale Walker and Turtle Island Tales.

During his residency, Hobey combines storytelling with shadow puppetry to bring literature to life through folktales and children's favorite literature. Prior to the residency, Hobey will introduce teachers to a list of suggested folktales from many cultures or the class may work with students' favorite stories to pre-select a story. Students will work in three to five small groups per class to construct their own puppets, learn shadow puppetry performance techniques and have an opportunity to perform for the other small groups in their class. The residency concludes with a student, family or community performance of one of Hobey's shadow puppetry shows.

For more than 10 years Hobey has also trained teachers in conjunction with the Kennedy Center Partners in Education program, offering three multi-hour professional development workshops for educators.



Residency Fees and Requirements

Grade Levels:	3–5
Maximum Number of Classes per Day:	Four; maximum of 25–30 students per class
Total Residency Cost:	\$5,500

Technical and Volunteer Requirements: Residency: An art classroom works best for the residency; however, any classroom with desks or tables will work. Performance: A 20' wide by 15' deep performance area that can be slightly darkened is needed with seating for audience. Electricity must be available within 25' of performance space.

Contact Information

c/o Loyd Artists
126 Worley Cove Road
Leicester, N.C. 28748
(800) 476-6240 or (828) 683-1997
FAX: (518) 647-5674
info@loydartists.com or peggy@loydartists.com

Jef Lambdin, Mime

Website: www.jeflambdin.com

Writing, Action, Mime! Using Mime to Promote Writing Skills

Curricular Connections: Language Arts and Theater Arts

Jef is on the roster of approved artists of the S.C. Arts Commission, designated as a teaching artist by the N.C. Arts Council and a fellow in the A+ Schools Network. He shares his work performing at festivals throughout North and South Carolina and teaching students from Kindergarten to adults about mime, mask work, ensemble techniques, composition, improvisation and variety arts.

Jef apprenticed with C.W. Metcalf and Tony Montanaro, with brief instruction from Jacques Lecoq. He has also studied acting, clowning, period dance and style, ballet, modern dance, and commedia dell'arte at the Dell'Arte School.

From 1976 to 1993 Jef was a member of TOUCH, a mime theater ensemble. With TOUCH, Jef created, collaborated on, directed and performed over 50 mime theater works, touring thousands of performances to audiences throughout the southeastern United States. In 1990 TOUCH received the North Carolina Theater Conference Award for "Excellence in Theater for Youth."

In this mime residency, the students focus on non-verbal communication: acting things out using their movements and actions. Using mime and movement, the students will learn how to communicate that they are touching various imaginary objects, how to portray different people and characters, and how to show that they become different objects in different places and environments.

The students will also bring sections of their literature text to life as tableau and as narrative mime scenes. They will actively employ pre-writing and writing skills in creating these mime scenes.

On the final day, the students will share their created scenes with other classes involved in the residency.

Residency Fees and Requirements

Grade Levels:	3–5
Maximum Number of Classes per Day:	Four
Total Residency Cost:	\$5,000

Technical and Volunteer Requirements: Large room free of obstructions; access to literature text/copies from which students will create scenes.

Contact Information

Jef Lambdin
P.O. Box 3331, Lumberton, N.C. 28359
(910) 738-8179
woole@mindspring.com



Mike Wiley Productions Ltd.

Website: www.mikewileyproductions.com and www.goingbarefoot.com

North Carolina Freedom Stories

Curricular Connections: History and Theater Arts

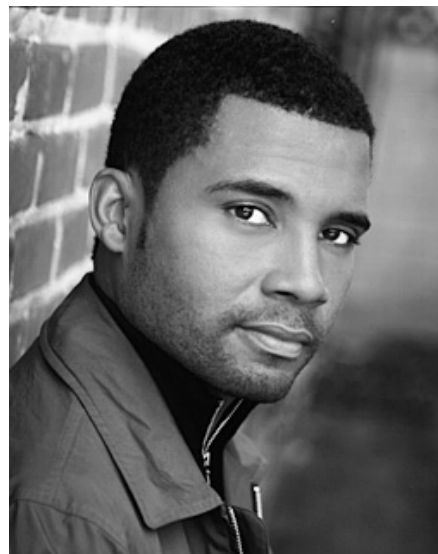
Acclaimed actor and playwright Mike Wiley has spent a decade fulfilling his mission to bring educational theater to young audiences and communities across the country. Through his work, countless students have been introduced to the stories and legacies of Emmett Till, the Tuskegee Airmen, Henry “Box” Brown and more. Most recently he developed a one-man play based on Tim Tyson’s novel *Blood Done Sign My Name*.

The performance, which integrates the vocal mastery of gospel singer Mary D. Williams, will be presented the first day followed by a talk back with novelist Tim Tyson, senior research scholar at the Center for Documentary Studies and visiting professor at the Duke Divinity School.

During the residency Mike Wiley will guide students through researching, scripting, designing and performing theatrical works of historical content. Students will locate and interview local civil rights heroes and then produce an informal staged reading called Freedom Stories. The reading will focus on local North Carolina civil rights heroes — men and women, black and white.

The goal is to give students the tools to engage audiences with social commentary, rich civil rights history and diversity awareness. By using modern forms of documentary performance and historical research, the students will lead others to ask themselves “Who stood up for me?” and moreover, “Who can I stand up for today?”

Blood Done Sign My Name, a finalist for the National Book Critics Circle Award and winner of the Christopher Award and the North Carolina Book Award, was the 2005 selection of the Carolina Summer Reading Program for all incoming freshmen at UNC-Chapel Hill.



Residency Fees and Requirements

Grade Levels:	9–12
Maximum Number of Classes per Day:	Five 45- to 55-minute classes per day or two 90-minute block schedule classes per day
Total Residency Cost:	\$7,500

Technical and Volunteer Requirements: Residency: Students should read Tim Tyson’s *Blood Done Sign My Name* in advance. Performance: Climate-controlled (performance) venue with a clear performing area (flat or ‘raked’) no less than 10’ x 10’ with a height clearance of 10’. Controlling external light is highly recommended when possible. Safe access into the house from the stage is required. Central position preferred, but side/aisle steps to stage permissible when necessary.

Contact Information

Mike Wiley
931 Homestead Park Drive, Apex, N.C. 27502
(919) 619-0096
mike@mikewileyproductions.com

North Carolina Shakespeare Festival

Website: www.ncshakes.org

Shakespeare to Go—On Your Feet

Curricular Connections: Language Arts and Theater Arts

Shakespeare To Go (STG) features a new seven-member touring company each year. With a primary emphasis on creating a multicultural company of young professional actors, N.C. Shakespeare Festival contracts performers with a strong Shakespeare background and teaching experience. As part of this residency, the company will perform a 60-minute version of *Romeo and Juliet* at the school.

The On Your Feet workshops offered by the STG teaching artists are designed to: 1) help students bring Shakespeare's plays off the page with clear guidance for accessing the performance clues in the text; 2) give students a sense of ownership through creative individual and group problem solving in creating the action of a given scene; 3) inspire students to overcome their preconceptions about the language of Shakespeare through fun, playful text exercises.

At the end of the five-day residency, all three workshop groups will join together to share their individual takes on selected scenes. The entire group will also join in some combined exercise work that emphasizes group collaboration and cooperation.

The residency will align with the N.C. Standard Course of Study for both theater arts and language arts by exploring the structure of a play and how it differs from other works of literature, learning how the historical context of Shakespeare's plays affected the works, and utilizing each student's own creative choice-making in physical and vocal exercises both individually and within a group.



Residency Fees and Requirements

Grade Levels:	9–12
Maximum Number of Classes per Day:	Three 45-minute classes to occur simultaneously or two 90-minute block schedule classes to occur simultaneously
Total Residency Cost:	\$6,300

Technical and Volunteer Requirements: Residency: Clear space with room for up to 30 students to move freely (a classroom with desks cleared or pushed against the wall will work). Performance: A 20' x 20' playing space and, preferably, seating in a thrust configuration (on three sides of the action); water; access to space 60 minutes prior to performance and assistance with load in and out from four or five student volunteers.

Contact Information

Pedro Silva
P.O. Box 6066, High Point, NC 27262
(336) 841-2273 x 224 or (336) 848-6337
pedro.silva@ncshakes.org

Tunde Afolayan

Website: tundevisualart.com

Mural Connection

Curricular Connections: Visual Arts, Math, Social Studies and Science

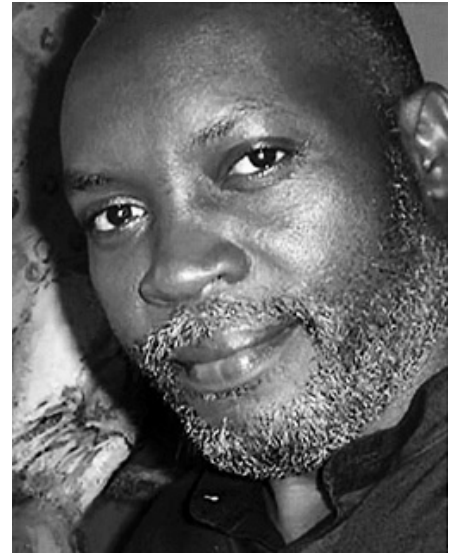
Tunde Afolayan, artist and educator, makes a significant impact on the lives of people through his paintings, workshops and residencies. Since completing his graduate studies at the University of Missouri-Columbia, Afolayan has exhibited paintings in Nigeria, Europe and the U.S. His thematic compositions in vibrant colors allow figurative images to adopt expressive, abstract and representational qualities.

Afolayan has executed numerous mural residencies in schools across North Carolina, Georgia, Mississippi and Virginia. His program, with a diverse range of students, has been used extensively in a successful national YouthARTS Development Project to demonstrate how the powers of art contribute to improving behaviors and attitudes in young people.

Mural Connection is designed to engage students in creating a mural that explores a theme approved by the school. Emphasis will be on the use of elements of art such as color, line, shape, form, value, space and texture to create a visual narrative based on the students' perception of the concepts. Students will engage in research for better understanding of the mural concept.

The residency will conclude with an event that celebrates the students' creative experience and accomplishments with parents, guardians and the school community. The finished mural will be installed at a designated site in the school as a permanent learning feature in the school.

Mural Connection focuses on production, criticism, aesthetics and history. Creative experience in this project equips the participants with enhanced learning skills in other subject areas such as math, social studies and science.



Residency Fees and Requirements

Grade Levels:	6–8
Maximum Number of Classes per Day:	Three
Total Residency Cost:	\$5,350

Technical and Volunteer Requirements: Well-ventilated space with easy access to water and electrical outlets; space must be available throughout the five day residency.

Contact Information

Tunde Afolayan
 P.O. Box 2425, Elizabeth City, N.C. 27909
 (252) 267-5981
 (919) 794-1247
tundevisualart@gmail.com

Peg Gignoux/art pluriel, llc

Website: www.ingignouxity.com

Secret Room Pop-Up Books

Curricular Connections: Language Arts and Visual Arts

Peg Gignoux, textile artist, enjoys working with diverse populations, facilitating vibrant public art projects and teaching book arts with North Carolina K–12 schools, museums and health care centers. A recipient of the Artist in Community 2008 Award, she holds a B.A. in English from Kenyon College and a M.I.D. in fibers from North Carolina State University.

In the Secret Room residency students will align written expression with visual expression in an imaginative three-dimensional book. Gignoux will supply each student with the text to an original allegorical tale and guide the students through the structural design and illustration process culminating in the creation of an eight-page illustrated pop-up book. Steps include folding, measuring, cutting, gluing and designing papers.

Distinctive to this book structure is the requirement that each student design an interactive portal that allows the reader to look into the interior “secret room” containing their illustrated interpretation of the climax of the story. Workshop sessions include collaborative activities such as painting patterned papers that will be shared and used for setting, characters and supporting details of the illustrated pages. The Secret Room book structure requires focused attention to spatial and sequential planning of text and image.

The project links with SCOS skills with basic elements of art: investigation of color, line, pattern, shape, space and texture as well as promotes attention to good craftsmanship requiring fine motor skills, good work habits, independent and collaborative learning. At the close of the residency, Secret Room books will be exhibited in the school media center.



Residency Fees and Requirements

Grade Levels:	3–5
Maximum Number of Classes per Day:	Four
Total Residency Cost:	\$5,075

Technical and Volunteer Requirements: Access to art room or multipurpose room with tables for students to work; two additional tables or equivalent counter space for art supplies; sink(s); drying rack or space for drop cloths for wet art work to dry between sessions.

Contact Information

Peg Gignoux
106 West Poplar Ext., Carrboro, N.C. 27510
(919) 967-3539 or (919) 619-9870
mjgignoux@gmail.com

Bryant D. Holsenbeck

Website: www.bryantholsenbeck.com

The Natural World: An Installation Residency

Curricular Connections: Visual Arts

Bryant Holsenbeck is a visual and community artist who makes her own art using recycled materials and who works with communities helping them to make art using recycled materials as well. From 1994 to the present, Holsenbeck has done residencies in the public schools of Wake County under the United Arts Council's education program. She has also done many residencies throughout N.C. and other states, as well working with many different communities.



In The Natural World residency, students will learn new uses for everyday materials. For example, they will learn to transform water and milk bottles into flowers and butterflies, or the inhabitants of a coral reef. Old magazines, plastic bags and fabric can transform into a forest with animals. The artist will work with the school to design the installation specifically for the school campus. Students will learn about recycling as well as how to create sculptures. Most of all they will discover the joy of working in the community and seeing how their individual efforts are very important in making a larger piece of artwork.

On the last day of the residency, Holsenbeck will work with the students to “install” the different parts of the environment created by the students into a cohesive whole somewhere in the school. The school and greater community will be invited to this event. This installation will remain in place as long as the school chooses. When it is disassembled, students will be able to take home their individual creations.

Residency Fees and Requirements

Grade Levels:	3–5
Maximum Number of Classes per Day:	Four to five
Total Residency Cost:	\$5,000

Technical and Volunteer Requirements: A space to work with the students and store collected materials. This residency does not travel from class to class; the students need to come to the artist. A space is needed to install the finished works into an installation, i.e. the entry way of the school, the library or a hallway. A staff member of the school needs to work with the artist at all times and provide support to the parent or community volunteers whenever possible.

Contact Information

Bryant D. Holsenbeck
2007 Pershing St., Durham, N.C. 27705
(919) 286-4712 or (919) 943-8720
bryant@bryantholsenbeck.com

Leni Newell

Website: www.leninewell.com

Exploring Batik

Curricular Connections: Visual Arts and Social Studies

Leni Newell is an award winning, well-established professional artist creating strong, thought provoking work. She holds a BA in Art Education and has been teaching workshops and classes since 1971. Newell has maintained a working studio at Artspace in downtown Raleigh for 20 years. She has conducted popular, successful and highly sought after residencies in over 100 schools since 1993. Newell's work has been exhibited in galleries, museums and juried shows across the country and can be found in numerous corporate collections. The strength of Newell's motivating residencies comes from her love of teaching and children, which allows her creative spirit to inspire students and staff alike.



Students will work with Newell to create their own individual Batiks, an exciting, self-esteem boosting, and amazingly successful art form. This unique process involves creating cloth paintings using melted wax resist and vibrant fabric dyes. The subject matter of the art can easily be integrated with the NCES in Science (e.g. ecosystems, landforms, rainforests, etc) and Social Studies (e.g. Latin American images, Native American images, Australian images, etc). This residency is an excellent means of reinforcing the 21st century learning skill of problem solving.

School staff, administrators and parents will be invited to participate in creating an additional batik to be gifted to the school – a great community builder and a wonderful way to collaborate in a unique way to beautify your school.

Newell will lead a hands-on participatory family workshop with students and adults during the residency. Each participant will enjoy experimenting and learning to make a small batik.”

Residency Fees and Requirements

Grade Levels:	4-12
Maximum Number of Classes per Day:	Four
Total Residency Cost:	\$5,500

Technical and Volunteer Requirements: The art room is ideal; however, a room with a sink, eight tables and no carpet will work; two adult volunteers needed per class. Volunteers need to wear old clothes, as the dyes are permanent. Volunteers do not need any art experience, just some enthusiasm.

Contact Information

Leni Newell
206 Washington Street, Emerald Isle, N.C. 28594
(252) 354-5513 or (252) 269-1804
leni_newell@earthlink.net

Sean Pace

Website: www.seanpace.com

Art Machines

Curricular Connections: Visual Art, Science and Technology

Sean Pace is a visual artist and 2010 NC Arts Council fellowship recipient. His work has been exhibited in solo and group shows in North Carolina, Alabama, Colorado, Florida, at the Metals Museum in Memphis Tennessee, and most recently at the Southeastern Center for Contemporary Art (SECCA) in Winston-Salem, NC. Sean creates kinetic sculptures that function as simple machines and demonstrate key principles of physics. His massive, animated sculptures constructed from industrial products and found objects are humorous, absurd, and inventive and erase the line between artist and spectator.



Working with SECCA, Sean piloted a residency guiding middle school students through the study of principles of engineering, modern mechanisms and contemporary art to kinetic experimentation, collaboration and concept development resulting in a kinetic sculptural fabrication (www.theintersectionsproject.org). This residency builds on the success of the SECCA residency by guiding participants through the design and fabrication of large, kinetic sculptural pieces that use ordinary and discarded materials. While collaborating in a group setting working in the arts and technology to build their vision, students demonstrate the dynamic and creative thinking required to create a functional and aesthetically pleasing art piece and learn elements of physics such as leverage, inertia, potential and kinetic energy, and force.

Residency Fees and Requirements

Grade Levels:	6-12
Maximum Number of Classes per Day:	Four
Total Residency Cost:	\$7,000

Technical and Volunteer Requirements: A space to work with the students and store collected materials. This residency does not travel from class to class; the students need to come to the artist. A space is needed to install the finished works into an installation, i.e. the entry way of the school, the library or a hallway. A staff member of the school needs to work with the artist at all times and provide support to the parent or community volunteers whenever possible. A space outside (about the size of six parking spaces) is also needed for the use of our portable workshop. A room with a sink, eight tables and no carpet will work; two adult volunteers needed per class. Volunteers need to wear old clothes, and bring enthusiasm. We will also require at least four power outlets. Space must be available throughout the workshop.

Contact Information

Sean Pace
109 Roberts Street, Asheville, N.C. 28801
828-582-3647
00pace@gmail.com

Sandy Creek Weavers

Website: www.sandycreekweavers.com

Weaving Our History: A Fabric Time Capsule and Lap Loom Fever

Curricular Connections: Social Studies and Visual Arts

During the past 12 years Sandy Creek Weavers have woven with over 120,000 children and adults in schools, hospitals, arts councils, cancer centers, libraries, senior centers, churches, government buildings, military bases and camps creating large tapestries on a 200-year-old floor loom. The tapestries incorporate items of sentimental value woven into the piece by community members, students, teachers, staff, faculty, patients, doctors, etc. The weaving(s) becomes A Fabric Time Capsule representing the time in history of the community and/or school, and it is left at the school for permanent display.



Participants learn about the process of weaving, loom construction, fibers, designs and the impact of handloom weaving on textile production in colonial times and now. They also make a connection with fabric, clothes and home furnishings in their everyday lives. The over arching goals of Sandy Creek Weavers are to keep alive an ancient art form and to help students and others make connections with weaving through art, social studies, math, history, language and craftsmanship.

This residency includes the design and hands-on weaving of a large tapestry (9 to 12 feet long) by the participants, woven on the 200-year-old floor loom. Lap Loom Fever includes individual weaving by participants on a lap loom designing and creating their own personal weaving(s) to take home. Students will come to understand weaving as an integral part of American life then and today, i.e. fabric for clothes, home furnishings, commercial uses, etc. "Weaving is a necessary part of our life historically and now as an art form and in everyday use."

As part of the residency the artist will also conduct an evening gathering of students, family, friends, faculty and staff of the school that features a hands-on experience for all. Students will be asked to bring an item of sentimental value to be woven into the tapestry A Fabric Time Capsule.

Residency Fees and Requirements

Grade Levels:	3–5
Maximum Number of Classes per Day:	Five
Total Residency Cost:	\$5,000

Technical and Volunteer Requirements: Minimum of two adults to assist loading and unloading of the loom upon arrival and departure; a secure, quiet, permanent space (classroom setting) with good lighting; (minimum loom space: 10' x 10'); tables and chairs for students (set in a semicircle fashion around the loom with students facing towards the loom); two long tables for weaver to use for supplies and equipment.

Contact Information

Victoria Sowers
P.O. Box 1036, Whittier, N.C. 28789
(252) 908-0387
victoria@sandycreekweavers.com